



RESISTOR

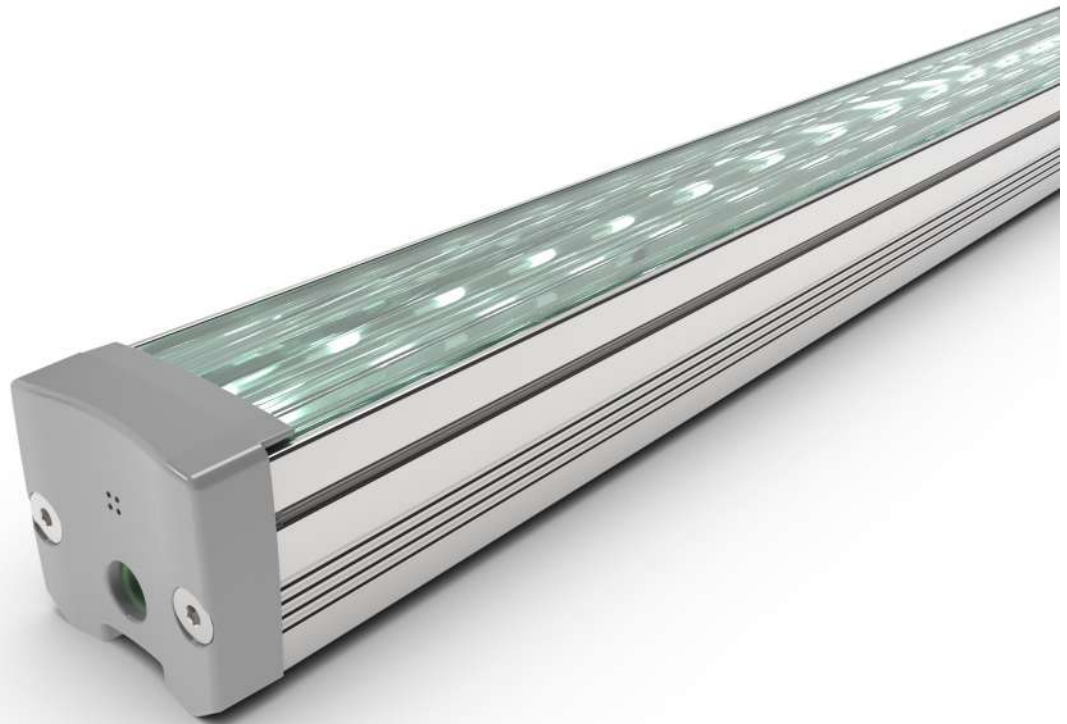
Low Profile IP65 24V Linear Lighting Solution



RESISTOR is a robust linear lighting fixture designed for wall grazing, featuring advanced optical technology, and manufactured in our Israel-based facilities.

This fixture has a sleek, narrow profile and operates on a 24-volt power supply.

The **RESISTOR** is specifically engineered for wall grazing and versatile outdoor lighting applications. It has options for narrow, medium, and wide lenses, making it ideal for Shade structure illumination and general lighting.



	CRI		lm	lm/w				
IP 65	80-90 CRI	30W/Meter	3852lm/M	107lm/w	WG,WW, N,M,W	2700 - 4000K	White	RAL / Anodize

TECHNICAL SPECIFICATION

OUTPUT

LED System	Samsung Mid Power LED Arrey
Intensity	3852 lm / CRI 80 / 4000K
Channel Range	1 Channel
Color Range	2700K / 3000K / 4000K
Optical System	Wall Grazw / Wall Wash / 33X56° / 66X86° / 87°

ELECTRICAL

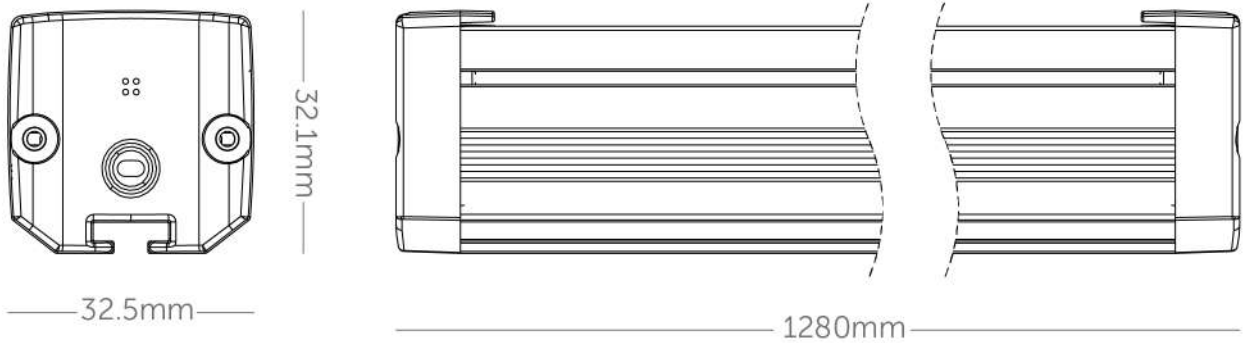
Control	24V Power Supply
Input Voltage	24V
Consumption	36W
Max LED's	140 LEDs / m
Efficiency LM/W	107 lm/w
Connection	2 * 0.75mm ²

ENVIRONMENTAL

IP Rating	IP 65
Working Temp.	-18°C ~ 40°C / 0°F ~ 104°F
Storage Temp.	-18°C ~ 60°C / 0°F ~ 140°F

PHYSICAL

Size	1280mm * H32.1mm * W32.5mm
Housing	Anodize Aluminum UV stabilized V0 optical grade



DRAWING